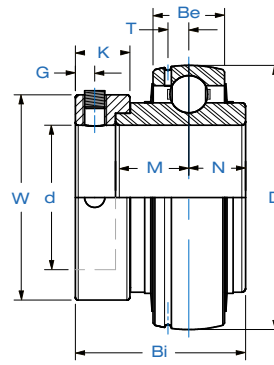




SNC 200

Normal-Duty Ball Bearing
Narrow Inner Ring
Eccentric Lock



Seal Styles



Standard Seal with Flinger



Triple-Lip L3 Seal

Bearing Insert	Shaft Dia.	Setscrew Used	Dimensions in. mm.									Load Rating lbs. kN.		Weight
	d in. mm.	in. mm.	D	Bi	Be	N	M	T	W	K	G	Dynamic Cr	Static Cor	lbs. kg.
SNC 201-8	1/2	1/4-28												
SNC 202-10	5/8	1/4-28	1.850	1.547	0.669	0.500	0.673	0.146	1.311	0.531	0.197	2,331	1,142	0.5
SNC 204-12	3/4	1/4-28	47.0	39.3	17.0	12.7	17.1	3.7	33.3	13.5	5.0	10.37	5.08	0.2
SNC 204	20	M6 x 0.75												
SNC 205-14	7/8	1/4-28												
SNC 205-15	15/16	1/4-28	2.047	1.622	0.669	0.563	0.685	0.154	1.500	0.531	0.197	2,542	1,349	0.6
SNC 205	25	M6 x 0.75	52.0	41.2	17.0	14.3	17.4	3.9	38.1	13.5	5.0	11.31	6.00	0.3
SNC 205-16	1	1/4-28												
SNC 206-17	1 1/16	5/16-24												
SNC 206-18	1 1/8	5/16-24	2.441	1.811	0.748	0.626	0.717	0.197	1.752	0.626	0.236	3,554	1,942	0.9
SNC 206	30	M8 x 1	62.0	46.0	19.0	15.9	18.2	5.0	44.5	15.9	6.0	15.81	8.64	0.4
SNC 206-20	1 1/4	5/16-24												
SNC 206-19	1 3/16	5/16-24												
SNC 207-20	1 1/4	5/16-24												
SNC 207-21	1 5/16	5/16-24												
SNC 207-22	1 3/8	5/16-24	2.835	1.961	0.787	0.689	0.740	0.224	2.189	0.689	0.256	4,683	2,626	1.3
SNC 207	35	M8 x 1	72.0	49.8	20.0	17.5	18.8	5.7	55.6	17.5	6.5	20.83	11.68	0.6
SNC 207-23	1 7/16	5/16-24												
SNC 208-24	1 1/2	5/16-24	3.150	2.122	0.827	0.748	0.843	0.244	2.374	0.720	0.256	5,294	3,057	1.7
SNC 208-25	1 9/16	5/16-24	80.0	53.9	21.0	19.0	21.4	6.2	60.3	18.3	6.5	23.55	13.60	0.8
SNC 208	40	M8 x 1												
SNC 209-26	1 5/8	5/16-24												
SNC 209-27	1 11/16	5/16-24	3.346	2.122	0.866	0.748	0.843	0.252	2.500	0.720	0.256	5,923	3,507	1.9
SNC 209-28	1 3/4	5/16-24	85.0	53.9	22.0	19.0	21.4	6.4	63.5	18.3	6.5	26.35	15.60	0.9
SNC 209	45	M8x1												
SNC 210-30	1 7/8	5/16-24												
SNC 210-31	1 15/16	5/16-24	3.543	2.248	0.945	0.748	0.969	0.256	2.752	0.720	0.256	6,402	4,046	2.3
SNC 210	50	M8 x 1	90.0	57.1	24.0	19.0	24.6	6.5	69.9	18.3	6.5	28.48	18.00	1.0
SNC 210-32	2	5/16-24												
SNC 211-32	2	3/8-24												
SNC 211-34	2 1/8	3/8-24	3.937	2.591	0.984	0.874	1.091	0.276	3.000	0.815	0.315	7,931	5,036	3.1
SNC 211	55	M10 x 1.25	100.0	65.8	25.0	22.2	27.7	7.0	76.2	20.7	8.0	35.28	22.40	1.4
SNC 211-35	2 3/16	3/8-24												
SNC 212-36	2 1/4	3/8-24												
SNC 212	60	M10 x 1.25	4.331	2.843	1.063	1.000	1.217	0.299	3.315	0.878	0.315	9,554	5,921	4.2
SNC 212-38	2 3/8	3/8-24	110.0	72.2	27.0	25.4	30.9	7.6	84.2	22.3	8.0	42.50	26.34	1.9
SNC 212-39	2 7/16	3/8-24												

MARINER®